

12th International Conference
Intelligent Data Processing
Gaeta, Italy - 2018

A COMPUTER-AIDED SYSTEM FOR DIFFERENTIAL DIAGNOSIS OF LUNG DISEASES

Anna A. Meldo, Lev V. Utkin
S-Petersburg, Russia

Given:

- Lung cancer (LC) is the most common malignancy tumor in all countries
- Lung cancer is the main reason of mortality from malignancy tumors
- Computed tomography (CT) is a gold standard of LC diagnostic, so CT images are optimal base for creating of intellectual diagnostic systems.

Goal:

- To develop an approach to improve AI algorithms which is close to “doctor’s logic”

Relevance: concepts

Data processing simplifying:

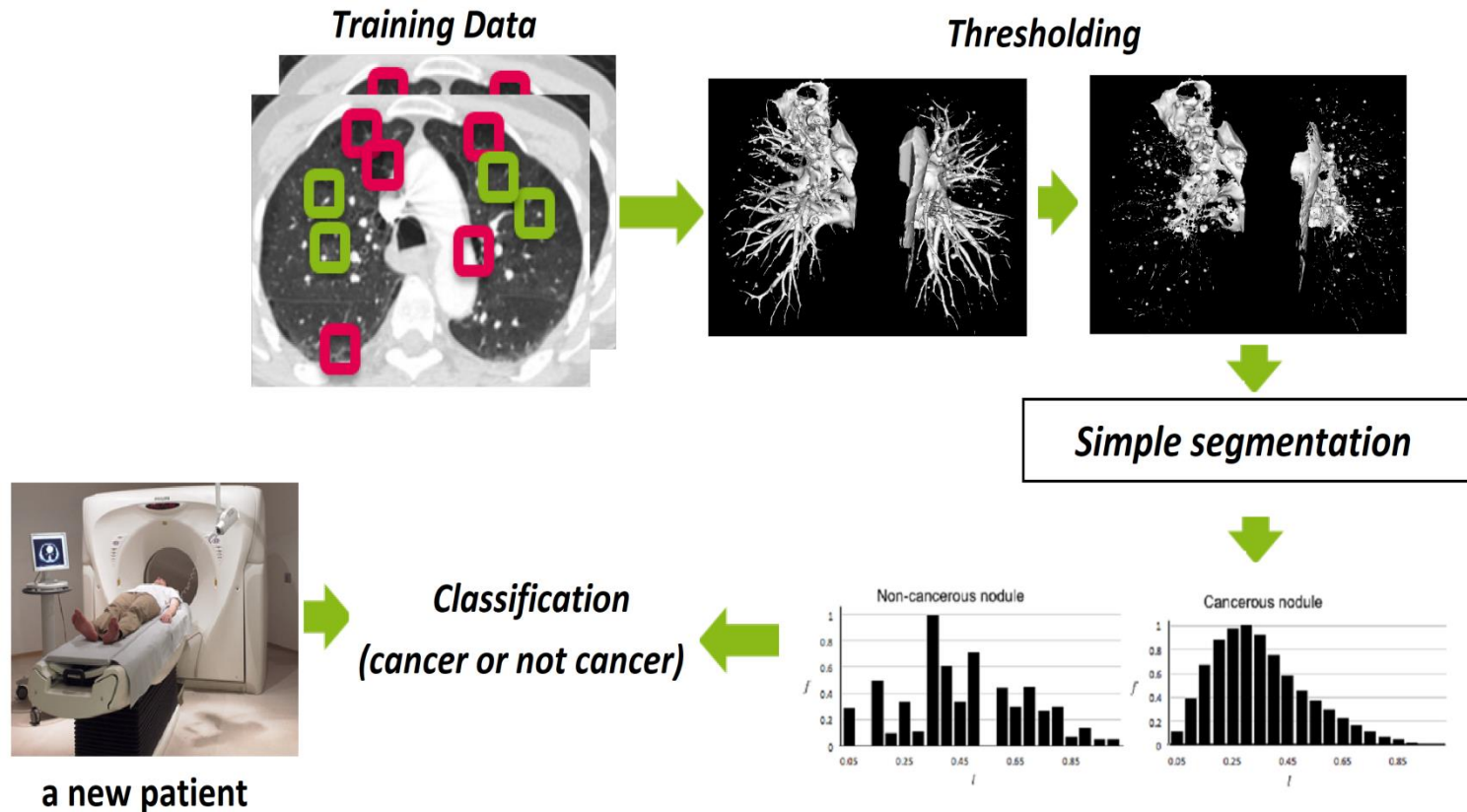
- 1. Nodule doesn't adjacent closely to vessels and other anatomical structures;
- 2. Nodule locates at the center of the chest and significantly associates with large blood vessels;
- 3. Nodule has sub pleural location;
- 4. Nodule associates with a small part of pleura.

Kostis W.J., Reeves A.P., et al 2003

Clinical and radyological:

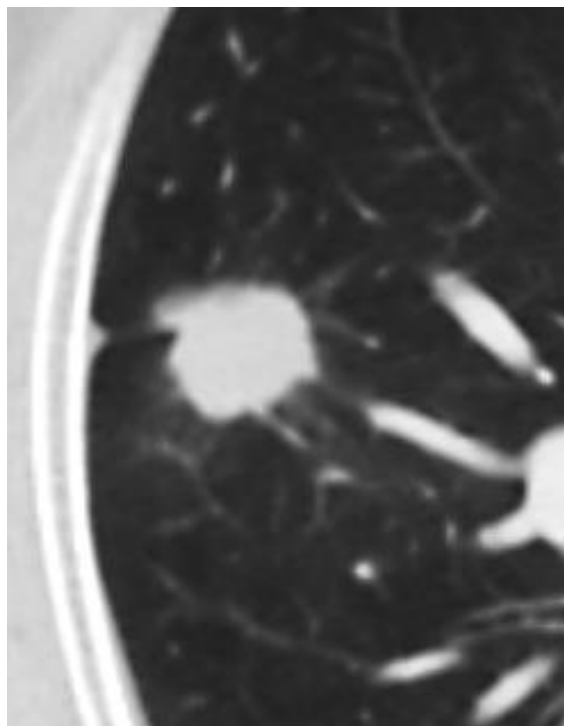
- 1. Central
 - endobronchial
 - peribronchial
 - nodular peribronchial
- 2. Peripheral
 - nodal (invasive)
 - lepidic
 - cancer of apex (Pancoast)
- 3. Mediastinal

Lung nodules detection by segmentation and NEOchord method

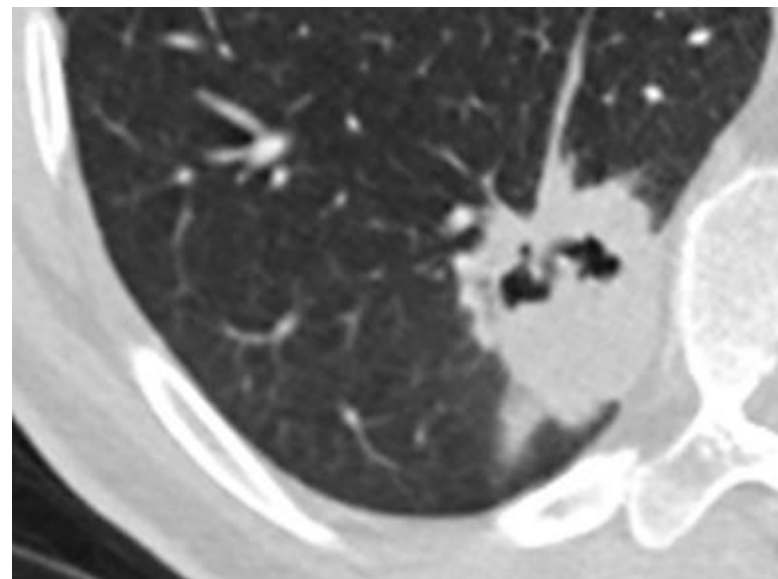


Patent application № 2018118626

Relevance: variety of structure

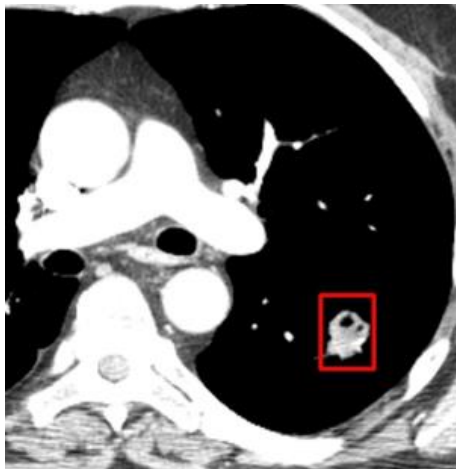


Adenocarcinoma

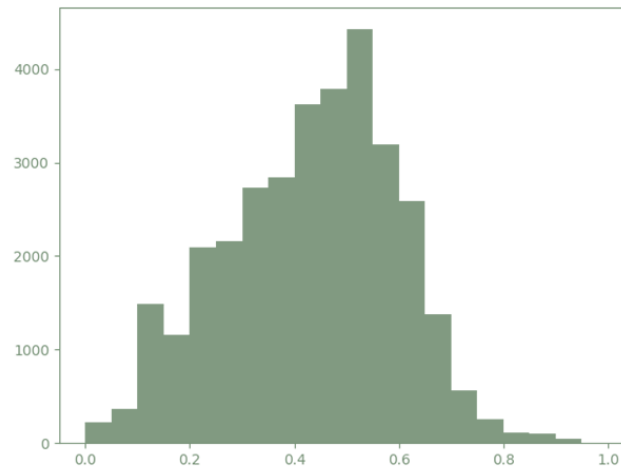


Squamous cell carcinoma

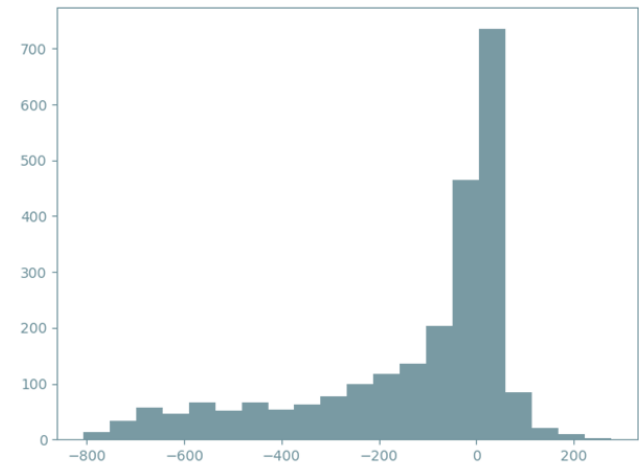
Extension of the feature vector by histograms of density



Squamous cell cancer



Histogram of chords



Histogram of density

Results:

Sensitivity	Specificity	Accuracy
93%	97%	95%

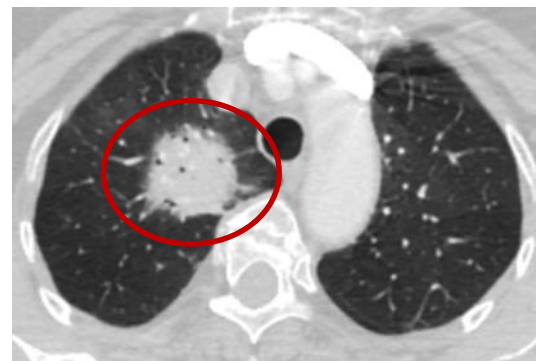
Learning: public datasets LIDC, LUNA16

Testing: LIDC, LUNA16, dataset of Oncocentre

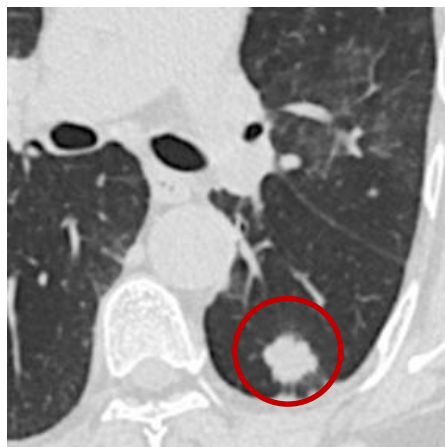
Relevance: cancer “masks”



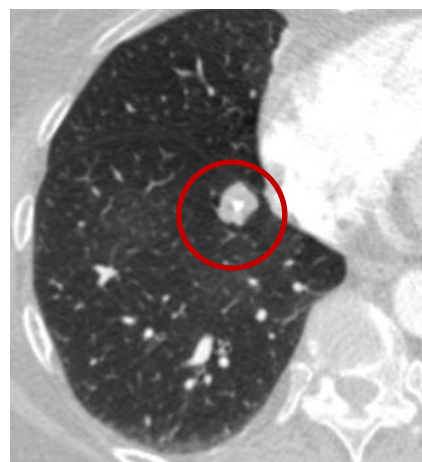
Tuberculosis



Lymphoma



Metastasis of breast cancer



Hamartoma

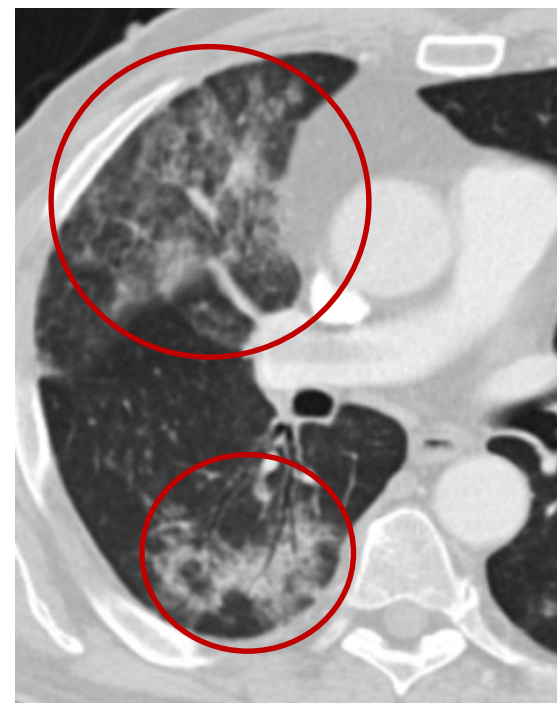
Relevance: cancer “masks”



Cancer

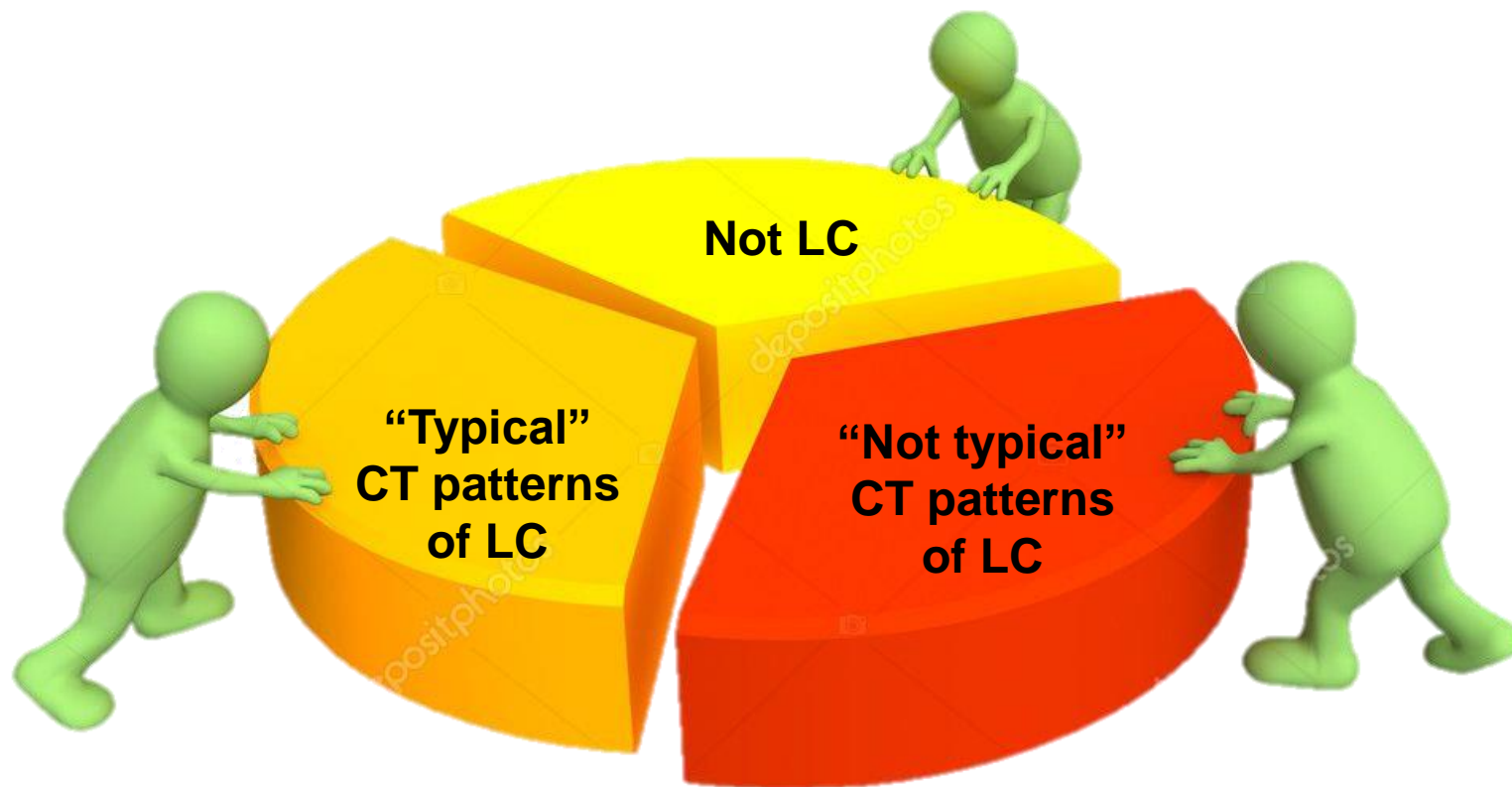


Cancer

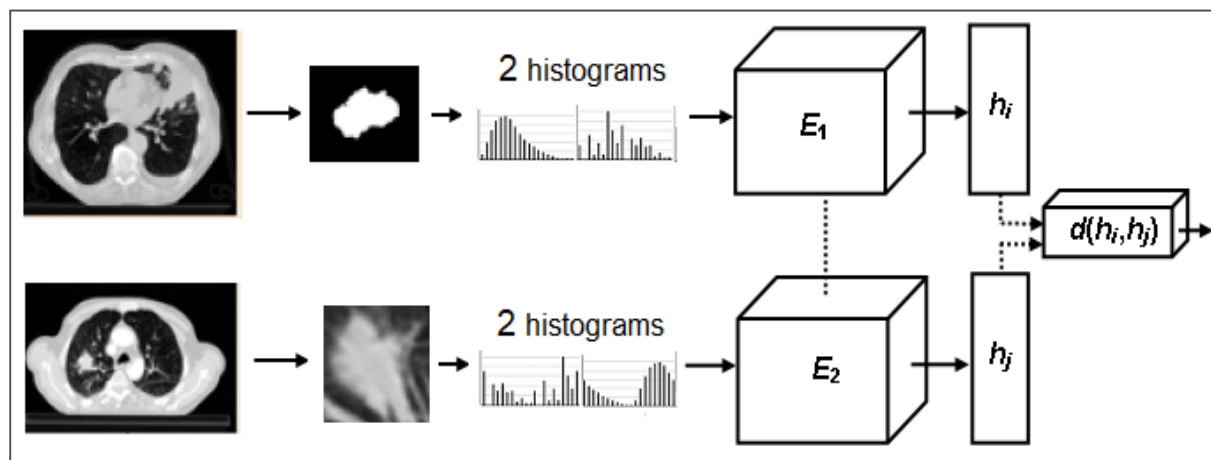
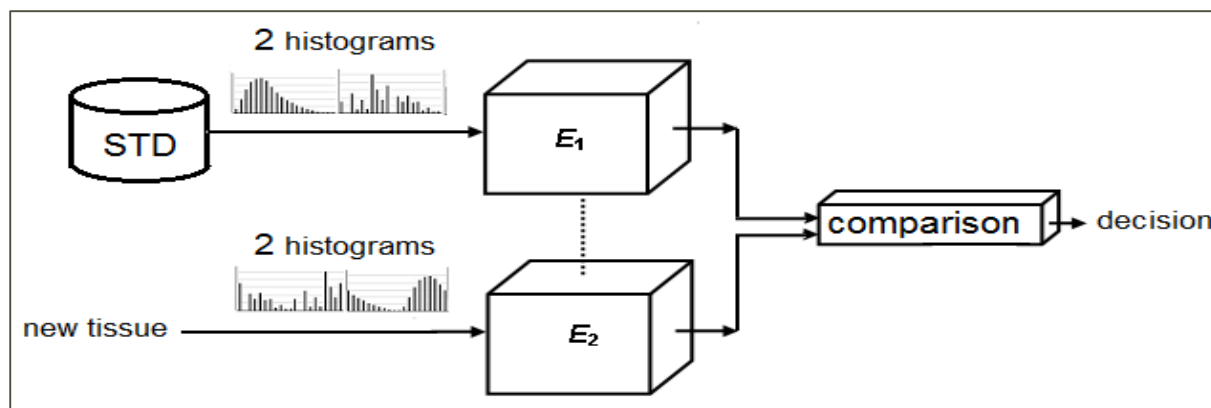


Cancer

Split of dataset



Siamese neural network for differential diagnosis



Conclusions:

- AI system for differential diagnosis of LC should consider variety of biological behavior of the tumor
- The main difficulty of the C-A system for LC diagnosis is insufficient quantity of “non-cancers”

Thank you for your attention!

